

# Wild Kids

## Life Cycles Worksheet

STAGE 2 - YEAR 3 & 4

CURRICULUM LINKS: ACSSU073, ACSHE061, ACSHE062, ACSIS071

This worksheet is tailored to Stage 2 students (years 3 and 4) and is designed to teach them about different animal life cycles.



### SECTION 1

#### Baby animal names

Just like humans, all animals start out as babies too! Some look like their parents when they are born, other animals look completely different and change as they grow into an adult.

- Match the following baby to the correct parent.
- Using the word bank write the correct baby name under the correct baby picture.



☒ Adult ☐ Baby

Name



☐ Adult ☐ Baby

Name



☐ Adult ☐ Baby

Name



☐ Adult ☐ Baby

Name



☐ Adult ☐ Baby

Name



☐ Adult ☐ Baby

Name



☐ Adult ☐ Baby

Name



☐ Adult ☐ Baby

Name

# Wild Kids

## Life Cycles Worksheet

STAGE 2 - YEAR 3 & 4

CURRICULUM LINKS: ACSSU073, ACSHE061, ACSHE062, ACSIS071

### SECTION 2

#### Butterfly life cycle

Butterflies go through a magical transformation called “metamorphosis”. This is because when butterflies are born they are actually caterpillars! Butterflies go through four different stages.

Place a number next to the stage to show the order of the butterfly life cycle.

Stage

The eggs- It all starts when a female butterfly lays her eggs, usually on leaves or stems of plants. Inside these tiny eggs, caterpillars grow.



Stage

The butterfly- Once the butterfly is ready to come out, the case around the pupa splits open. The butterfly waits for its wings to dry until it is ready to take its first flight and search for food ie flowers. The the butterfly life cycle starts all over again!



Stage

The pupa- Once fully grown, the caterpillar forms itself into a “pupa” (or chrysalis) – a kind of vessel in which the caterpillar changes into a butterfly. The “pupa” stage may last a few weeks to several months depending on the species. During this time, a hardened case forms around the pupa to protect it from predators and extreme weather conditions.



Stage

The caterpillar- Once ready, the caterpillar leaves its egg home and enters the big outside world! Caterpillars are born with one serious appetite, they actually eat their way out of the egg and immediately start eating on the leaves. During this stage, they shed their skin four or five times, as the caterpillar grows, its skin becomes too tight and splits open.



# Wild Kids

## Life Cycles Worksheet

STAGE 2 - YEAR 3 & 4

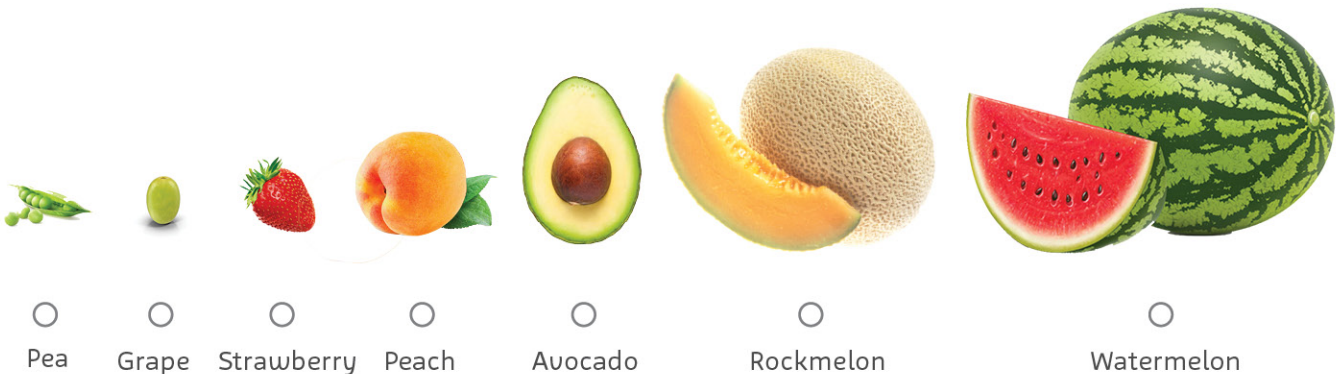
CURRICULUM LINKS: ACSSU073, ACSHE061, ACSHE062, ACSIS071

### SECTION 3

#### How big is my baby?

Guess the size of the Tasmanian devil's babies when they are born. Circle the answer you think is the most correct.

A Tasmanian devil is born the same size as a.....



### SECTION 4

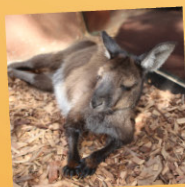
#### Koala Joey

When koala joeys are born at WILD LIFE Sydney Zoo they undergo a health check to make sure they are born fit and healthy.



#### JOEYS

Koala babies are called joeys. There are several other animals whose babies are also called joeys, circle those animals below:



Kangaroo



Possum



Wombat



Echidna



# Wild Kids

## Life Cycles Worksheet

STAGE 2 - YEAR 3 & 4

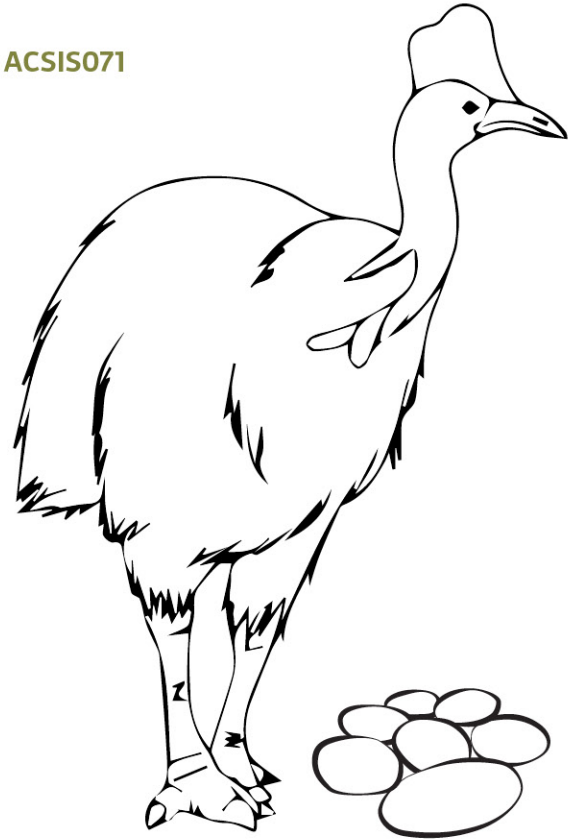
CURRICULUM LINKS: ACSSU073, ACSHE061, ACSHE062, ACSIS071

### SECTION 5

#### Cassowary

Female cassowaries lay large green eggs in the nest, while the father cassowaries sit and incubate the eggs until they are ready to hatch.

Colour in the following picture of the daddy cassowary looking after his eggs. Make sure to colour the eggs in green!



### SECTION 6

#### I live in a pouch!

Kangaroo's are marsupials that belong to the Macropod family. This means that kangaroos have pouches which their babies grow until they are strong enough and don't need mum anymore.

Trace over the lines to complete your picture of the joey living inside the kangaroo's pouch.



# Wild Kids

## Life Cycles Worksheet

STAGE 2 - YEAR 3 & 4

CURRICULUM LINKS: ACSSU073, ACSHE061, ACSHE062, ACSIS071

### SECTION 7

#### Vocabulary List

Look up the meanings of the following words that relate to animal life cycles and write them below

Incubate	<input type="text"/>
Pupa	<input type="text"/>
Eggs	<input type="text"/>
Nests	<input type="text"/>
Life Cycles	<input type="text"/>
Hatchling	<input type="text"/>
Marsipuals	<input type="text"/>
Pouch	<input type="text"/>
Metamorphis	<input type="text"/>
Joey	<input type="text"/>